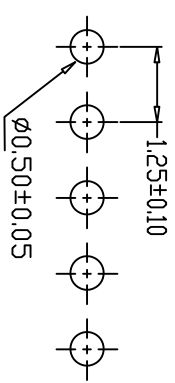
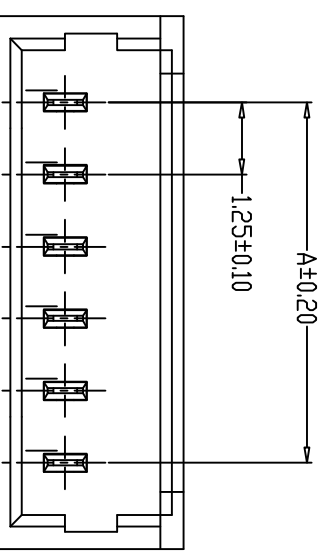
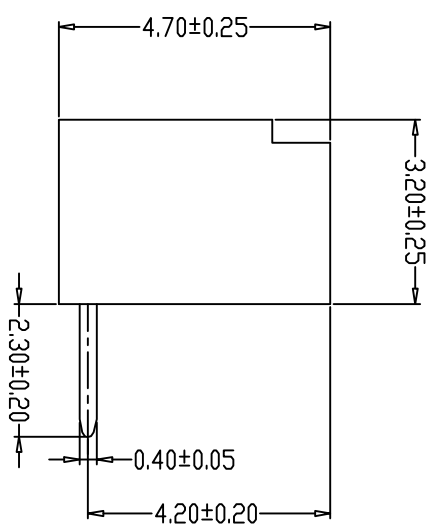
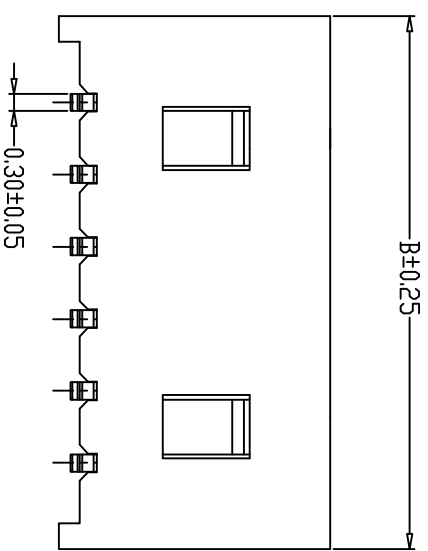


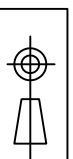
SPECIFICATIONS

- 1、Current Rating: 1A AC, DC
- 2、Voltage Rating: 125V AC, DC
- 3、Temperature Range: -25°C~+85°C
- 4、Contact Resistance: 20mΩ Max
- 5、Insulation Resistance: 100mΩ Min
- 6、Withstanding Voltage: 500V AC/minute
- 7、Material: Wafer PBT, UL94V-0
PIN Phosphoric copper Tin-plated



PCB LAYOUT

编号	尺寸 (mm)	
	A	B
A1251WR1-02A	1.25	4.25
A1251WR1-03A	2.50	5.50
A1251WR1-04A	3.75	6.75
A1251WR1-05A	5.00	8.00
A1251WR1-06A	6.25	9.25
A1251WR1-07A	7.50	10.50
A1251WR1-08A	8.75	11.75
A1251WR1-09A	10.00	13.00
A1251WR1-10A	11.25	14.25
A1251WR1-11A	12.50	15.50
A1251WR1-12A	13.75	16.75
A1251WR1-15A	17.50	20.50



单位	mm
比例	1:1

深圳市泰华电子有限公司
TaiHua Electronics Co., Ltd

核准:	版本:	产品名称	1.25插口弯针座
APPROVED BY	NO	Production name	
审核:	页次:	产品编号	TH-A1251WR1-NA
CHECKED BY	1/1	Product No	
制图:	日期:	客户编号	
DRAWN BY	2022.8.31	Client No	